

DAIMLER TRUCK

Supplier information on the Global Parts Center Halberstadt go-live process

Introduction to the Global Parts Center (GPC) Halberstadt



AGENDA



AGENDA

1. General information about the GPC

2. Initial Stocking & what to consider

3. Status supplier evaluation in eSEP++



We shape **our own** global Daimler Truck Aftersales Logistics now

WHAT A CHALLENGE
WHAT A **CHANCE!**



Separation of truck scope from the Global Logistics Center Germersheim to the Global Parts Center Halberstadt

GLC Germersheim

- Today: Warehouse for cars & trucks



- May 2025: Warehouse for cars only



GPC Halberstadt

- Today: no warehouse

- May 2025: new warehouse for Mercedes-Benz Trucks parts



The new Global Parts Center Halberstadt will be the beating heart of our Daimler Truck parts logistics



-  approx. 900 000 m² site area
-  Property length from north to south about 1 km
-  approx. 250 000 m² main logistics buildings
-  ~200 trucks in- & outbound per day
-  ~110 000 different part numbers on stock

The construction of the GPC is making great progress



The construction of the GPC is making great progress

Office Building



The construction of the GPC is making great progress

High-bay warehouse – base plate



The construction of the GPC is making great progress

Gate house



The construction of the GPC is making great progress

Logistics building



The call-offs for the initial stocking will be transmitted to the suppliers via our new DTAG system landscape on 03-Feb-2025

**28-Mar-2024 &
01-Aug-2024**
Info mail

1

Oct. 2024
Online session

2



03-Feb-2025
Call-offs
GPC

3

12-May-2025
Inbound
Go-Live GPC

4

May – Nov. 2025
Parallel delivery
GLC und GPC

5

We need your feedback urgently!

REMINDER

If you have not yet provided us **feedback** via the **online questionnaire**, please do so **by 18-Oct-2024!**



Info mail

Sent: 01-Aug-2024

Subject: Daimler Truck AG

After Sales supplier
information on the new
central warehouse in
Halberstadt

AGENDA

1. General information about the GPC

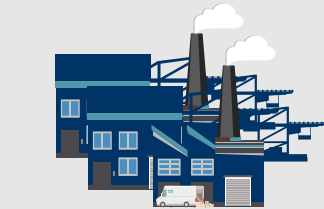
2. Initial Stocking & what to consider

3. Status supplier evaluation in eSEP++



Supply chain Daimler Truck parts

Current process



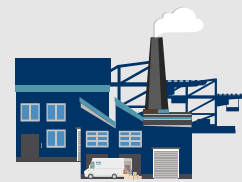
Supplier

After Sales
replenishment



Global Logistics Center
Mercedes-Benz AG
plant ID 057

Parallel delivery phase May 2025 – November 2025



Supplier

After Sales
replenishment



Global Logistics Center
Mercedes-Benz AG
Plant ID 057

Initial
stocking



Global Parts Center
Daimler Truck AG
New plant ID 963

From November 2025



Supplier

After Sales
replenishment

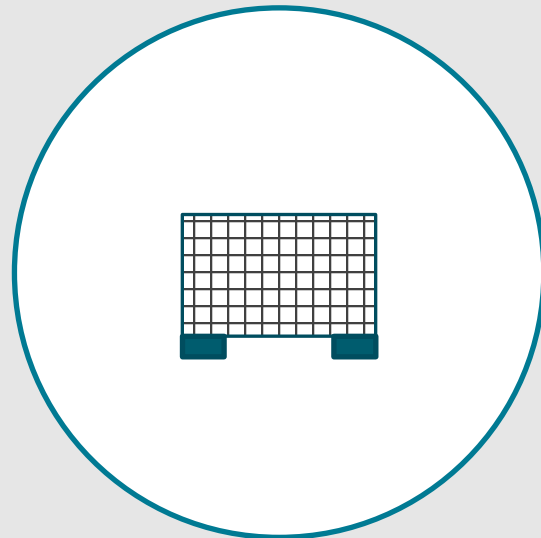


Global Parts Center
Daimler Truck AG
new plant ID 963

Effected areas



Call-offs



Load carrier



Packaging



Transportation

Call-offs



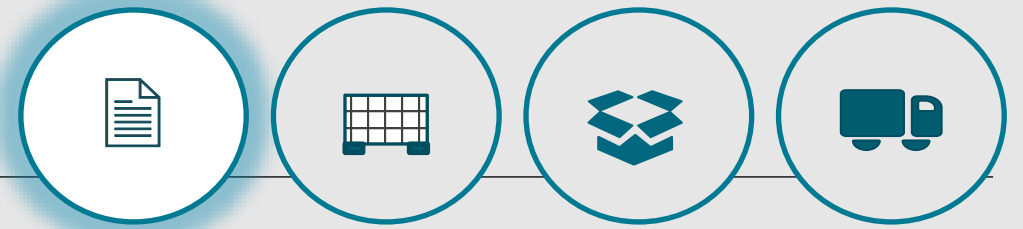
GLC Germersheim

- The transfer of call-offs remains unchanged for plant 057 (GLC Germersheim)
- EDI, webEDI

GPC Halberstadt

- Purchase contract: Plant extension for all truck parts to plant 1963 (GPC Halberstadt)
- Creation of new delivery schedules for plant 963/1963
- From Q1/2025: Transmission of delivery call-offs (EDI, webEDI)

Call-offs



General information about EDI

EDI enables external partners to exchange data (e.g. for logistics or finances) with Daimler Truck locations around the globe

In most cases there will be an EDI-communication between Halberstadt and their suppliers

Suppliers with an established EDI-connection with any Daimler Truck plant are already connected to the Daimler Truck EDI-environment

Specific information concerning Halberstadt

Any EDI-communication with the new Halberstadt plant requires new EDI-communication parameters, which are provided in a parameter datasheet

As the start date of communication with Halberstadt is related to a ramp-up project phase, the go-live for the supplier communication with the plant is individual (the exact date will be communicated by the Halberstadt team in advance)

Parallel EDI-communication will take place between your supplier numbers and plant Germersheim as well as plant Halberstadt for a certain period

Plant number Germersheim: 057

Plant number Halberstadt: **963**

Example for OFTP2 connection

Usage of the new file name MB**963**xxxx for EDI-communication with the Halberstadt plant

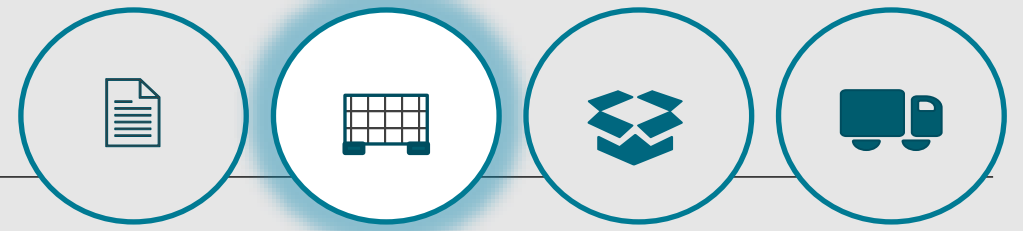
There will be a new plant-specific Odette ID for the plant as well

Implementation of EDI connection is done together with our service provider T-Systems Internation GmbH and external partners

Contact for technical questions

(e.g. regarding communication parameters or setup):
edi.hotline@t-systems.com

Load carriers



GLC Germersheim

- 4-digit number (e.g. LT 2032)
- Color “green”
- Order of load carriers via eCon (mbox-006-ltdispo@mercedes-benz.com)
- Daimler Truck AG load carriers (“light green” / “yellow base”) may **not** be delivered to Germersheim



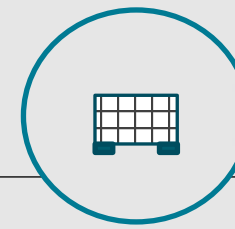
GPC Halberstadt

- 6-digit number (e.g. 202032)
- Color “light green” oder “green with yellow base”
- Daimler Truck load carriers can be ordered from February 2025 via RPM* (mbox will follow)
- Mercedes-Benz AG load carriers (“green”) may **not** be delivered to Halberstadt



* RPM = DTAG eCon—successor

Packaging



GLC Germersheim

Packaging guidelines

- Still valid
- Still available via the Daimler Truck Supplier Portal

Cardboard boxes and design

- Use of the current Mercedes-Benz design is mandatory
- Labels, brown cardboard, white cardboard in Mercedes-Benz design
- Use of Daimler Truck Design **not** permitted

Label printing and label design

- Label Software: VAS2000
- Current design print templates remain unchanged
- Direct printing of labels still possible

Contact:

- mbox-006-glc-cw1-verpackungsplanung@mercedes-benz.com

GPC Halberstadt

Packaging guidelines

- New
- Will be made available from February 2025 via the Daimler Truck Supplier Portal

Cardboard boxes and design

- Use of the new Daimler truck design mandatory from November 2025
- Labels, brown cardboard, white cardboard in Daimler Truck design

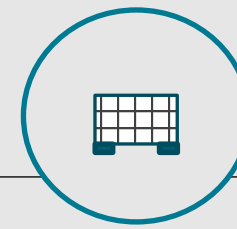
Label printing and label design

- Label Software: VASTruck
- New design and print templates in Daimler Truck Layout
- Direct printing of labels not possible until further notice (separate label printing required)
- Software and print templates will be available from November 2024

Contact:

- Verpackungsplanung_GPC@daimlertruck.com

Transportation



GLC Germersheim

- Plant 057: Transportation processing remains unchanged
- No changes in freight forwarding services needed
- Transportation of empties remains unchanged
- Contact persons remain the same

GPC Halberstadt

- Plant 963: New transport processing for deliveries
 - More information provided as of February 2025
- Announcement of forwarding agents for E-/F-Incoterms
 - More information provided as of February 2025
- Free delivery supplier: New unloading points at GPC Halberstadt
- Transport of empties from GPC
- New contacts:
 - mbox will follow

Summary

GLC Germersheim – until November 2025



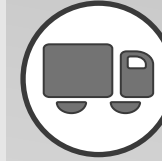
EDI/webEDI order from
Germersheim



Packaging in Mercedes-
Benz Design
(only relevant for packaging by the supplier)



Load carrier green
(4-digit number)



Shipment to plant 057
(transport organized by GLC
Germersheim)

GPC Halberstadt – from May 2025



EDI/webEDI order from
Halberstadt



Packaging in
Daimler Truck Design
(only relevant for packaging by the supplier,
transition phase until Nov. 2025)



Load carrier green or
green/ yellow
(6-digit number)



Shipment to plant 963
(transport organized by GPC
Halberstadt)

Task overview for suppliers



until 18-Oct-2024

Feedback on supplier questionnaire

mbox_060_suppliermanagement@daimlertruck.com

until 20-Dec-2024

**Confirmation of the final initial stocking quantities
(communication will take place at the end of November)**

mbox_060_suppliermanagement@daimlertruck.com

until 31-Jan-2025

Creation of new plant 963 in EDI

edi.hotline@t-systems.com

from 03-Feb-2025

Order load carriers for initial stocking

mbox_060_suppliermanagement@daimlertruck.com

until 30-Apr-2025

Integration of GPC Halberstadt in transport processing for free delivery suppliers

mbox_060_suppliermanagement@daimlertruck.com

Latest until 31-Oct-2025

Change of packaging design to new Daimler truck design

Verpackungsplanung_GPC@daimlertruck.com

AGENDA

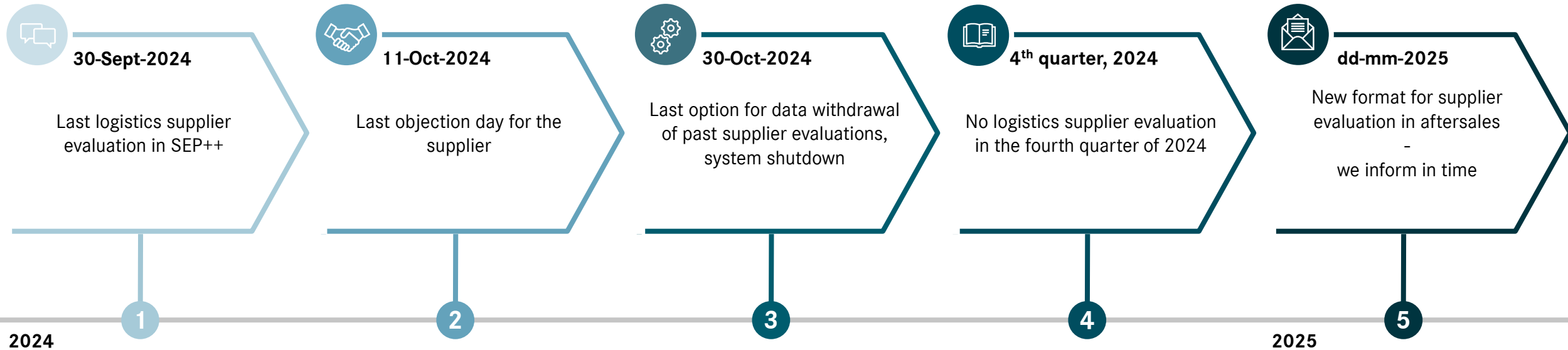
1. General information about the GPC

2. Initial Stocking & what to consider

3. Status supplier evaluation in eSEP++



eSEP++ Logistics supplier evaluation Aftersales (plant 057/ 963) will be suspended from October 2024



- **Access** to the logistical parts of the eSEP++ supplier evaluation will be **switched off** for suppliers from **October 30, 2024**.
- Data deduction for suppliers is possible until **October 30**. Please ensure that you do this on your own responsibility.
- There will be **no logistics supplier evaluation in the fourth quarter of 2024**.

DAIMLER TRUCK

THANK YOU!

